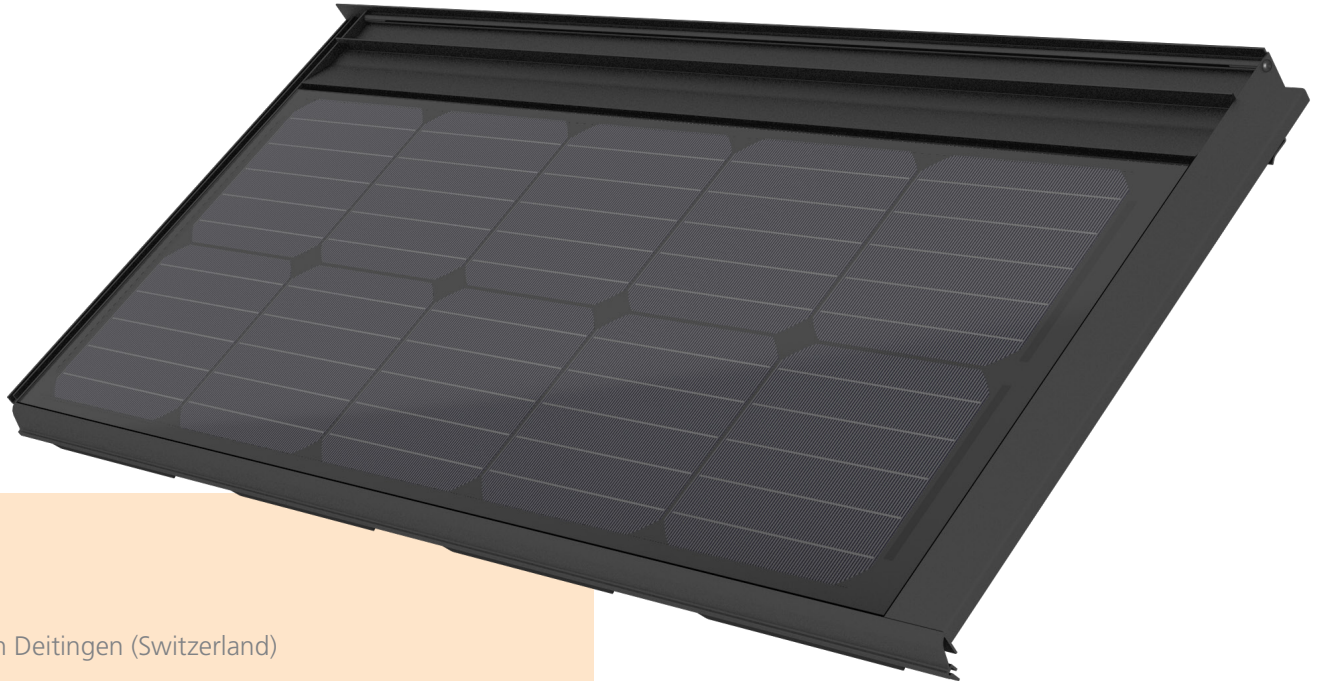


0801.4002

Solar tile M50-10 Full Black

Glass-glass / monocrystalline / 50 Wp / Full Black



Made in Deitingen (Switzerland)



Meets highest aesthetic requirements



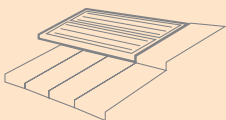
Lifespan of over 50 years due to glass-glass technology



Full traceability of all raw materials



No tariff restrictions for exports to the EU



Seamless transition from module to tile
No sheet metal flashings required
Perfect for small and medium-sized projects

Alternative colour (option)



0801.4202 M36-10 Terracotta

Mounting accessories

0801.4102 Aluminium clip for 30 mm battens
0801.4107 Aluminium clip for 24 mm battens
0801.4105 End rail for tile FS 03
0801.4106 End rail for tile MS 95

Compatible tiles

Pantile FS 03 (ZR)
Interlocking pantile MS 95 (ZR)

Electrical data STC

| | |
|-----------------------------|---------|
| Nominal power (Pmpp) | 50 Wp |
| Nominal voltage (Umpp) | 5.4 V |
| Nominal current (Impp) | 9.26 A |
| Open circuit voltage (Uoc) | 6.5 V |
| Short circuit current (Isc) | 9.61 A |
| Cell efficiency | 21.20 % |
| Module efficiency | 18.46 % |
| Power sorting | -0/+5 % |

STC (Standard Test Conditions): irradiance 1000 W/m², cell temperature 25°C, AM 1.5
Measuring tolerances ±3 % (Pmpp); ±10 % (Umpp, Impp, Uoc, Isc)

Electrical data at partial load 800 W/m²

| | |
|-----------------------------|--------|
| Nominal power (Pmpp) | 38 Wp |
| Nominal voltage (Umpp) | 5.0 V |
| Nominal current (Impp) | 7.54 A |
| Open circuit voltage (Uoc) | 6.1 V |
| Short circuit current (Isc) | 7.48 A |

Measuring tolerances ±5 % (Pmpp); ±10 % (Umpp, Impp)

Thermal properties

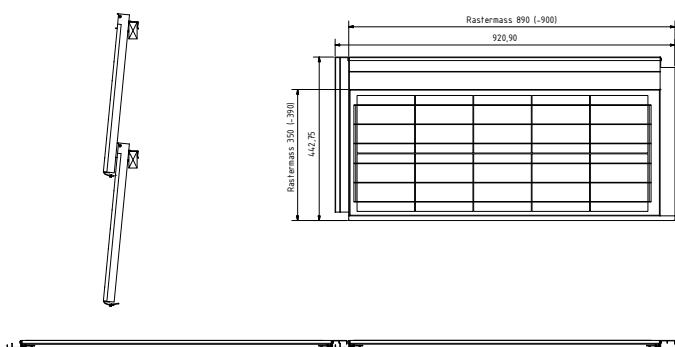
| | |
|---|-------------|
| Nominal operating cell temperature (NOCT) | 45 ± 2 °C |
| Temperature coefficient Uoc | -0.26 %/°C |
| Temperature coefficient Isc | +0.031 %/°C |
| Temperature coefficient Pmpp | -0.37 %/°C |

Operating conditions

| | |
|--|--|
| Temperature range | -40 ... +85 °C |
| Max. system voltage | 1000 V |
| Max. reverse current | 20 A |
| Max. string fuse | 16 A |
| Max. wind and snow loads * | Up to 2'400 N/m ² (wind suction) Up to 5'400 N/m ² (snow pressure) |
| Hail resistance | ø40 mm at 23 m/s Hail protection class 4 |
| Application class (acc. to IEC/EN 61730) | A |
| Fire protection | Top and back layer are made of heat-resistant glass. The component is considered to be non-combustible material as defined by the Cantonal Fire Insurances. |
| Protection class | II |
| Salt spray test | IEC/EN 61701 I+II |
| Ammonium corrosion test | IEC/EN 62716 |

* Max. possible forces acting on the module. The maximum values in mounted condition depend on the substructure as well as the installation situation. If the requirements are higher than IEC/EN 61215, a project-specific dimensioning of the mounting system is necessary.

Technical drawing



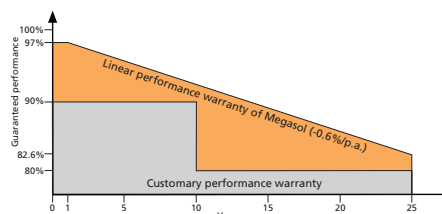
Note: The instructions in the installation manual must be strictly complied with. Further information about approved utilization of products can be found in the installation manual or can be requested from the technical service.

General data

| | |
|----------------------------|---|
| Laminate structure | Glass-glass |
| Cell type | Monocrystalline |
| Cell size | 156x156 mm |
| Number of cells (matrix) | 10 (2x 5) |
| Colour between cells | Black |
| Frame | Solar tile Aluminium, anodized black, with assembled rubber lip |
| Front side | 3.2 mm solar glass High-transmission, tempered/toughened, nano-finished/antireflective surface |
| Encapsulation material | Special EVA (UV+/IR+) with lowest water vapour permeability |
| Back side | 3.2 mm solar glass Tempered/toughened |
| Junction box | 1 bypass diode, IP67 |
| Cable cross section | 4 mm ² |
| Connectors | MC4 compatible, IP67 |
| Dimensions (LxWxH) ±3.0 mm | 921 x 443 x 40 mm |
| Modular dimensions (LxW) | 890 (-900) x 350 (-380) mm |
| Weight | 6.5 kg |

Quality and warranty

| | |
|-----------------------------|--|
| Quality characteristics | PID-free (no potential induced degradation) Yield-optimized low-light performance Full traceability of all raw materials |
| Product warranty | 10 years |
| Linear performance warranty | 25 years |



Relative efficiency level in relation to the minimal output (%). At least 97 % of the minimum output during the first year. Afterwards, max. 0.6 % degradation per annum. At least 91.6 % of the minimum output after 10 years. At least 82.6 % of the minimum output after 25 years. All data within the measuring tolerances. Warranties according to the respective latest Megasol Warranty Conditions which can be found on www.megasol.ch/warranty.



E-mail: info@megasol.ch
Hotline: +41 62 919 90 90
www.megasol.ch



Megasol partner